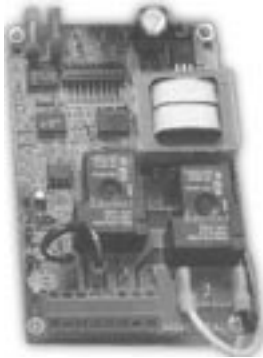


POWER VENTERS AND ACCESSORIES TJERNLUND

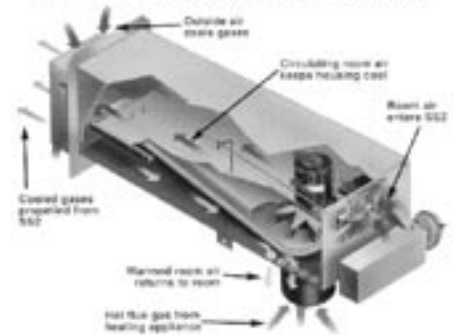


UC1

Features:

- Adjustable pre and post purge.
- LED status/diagnostic indicators.
- Prover switch delay to avoid burner start up and wind induced short cycling.
- Interlocks with any 24-120VAC burner control circuit.
- Includes "dry" contact actuation option.

An Inside Look At The SS2 System



Part #	Description
DJ3	Draft inducer for 3" to 6" dia. pipe
D3	Draft inducer for 5" to 8" dia. pipe
SS1	Side Shot Power Venter for 50-160 MBtuH gas or 70-220 MBtuH flame retention oil
SS2	Side Shot for Oil Only
GPAK-1	Power Venter Kit
GPAK-1T	Power Venter Kit
GPAK-JT	Power Venter Kit
VH1-3	Sidewall vent hood 3"
VH1-4	Sidewall vent hood 4"
VH1-6	Sidewall vent hood 6"
PAI-1T	Inforcer - timer/clock operated fresh air intake
PAI-10	Inforcer - interlocked combustion air intake for oil equipment
PAI-2G	Inforcer - interlocked combustion air intake for gas equipment
MAC3	Control for PAI
MAC4	Control for PAI
WHK-1	Instantaneous Water Heater Control Interlock

Model No.	Natural LP Gas MBtuH	Flame Retention Oil Burner MBtuH	Standard Oil Burner MBtuH	Max. Equivalent Feet	Dimensions HxWxD	Inlet Center
SS1	50-160	70-220	70-180	50	14 ³ / ₄ x15 ¹ / ₈ x27 ³ / ₈	23 ¹ / ₄
SS1C	N/A	50-315	50-223	50	14 ³ / ₄ x15 ¹ / ₈ x27 ³ / ₈	23 ¹ / ₄
Fan Assisted NG & LP			Atmospheric NG & LP			
SS2	40-150	70-168	40-125	50	13 ¹ / ₄ x10 ¹ / ₂ x38	22 ³ / ₈

SS1/SS1C require 8"H x 8³/₈"W opening through wall. SS2 requires an 8¹/₂"H x 10¹/₂"W opening.

Model No.	Burner capacity MBtuH	Max Venting Length	Vent Pipe Dia.	Dimensions HxWxD	Inlet/Outlet
VP-2	60	75 ft.	3"	10 ¹ / ₂ x7 ¹ / ₂ x10	3"
VP-3	60-120	75 ft.	4"	7 ⁷ / ₈ x10 ¹ / ₄ x7	4"

VP-2 includes VH1-3 Vent Hood - VP-3 includes VH1-4 Vent Hood

Model No.	Vent Dia.	Min. MBtuH cap.	Vent Distance	Vent Temp Max	Max MBtuH cap.	Vent Distance	Vent Temp Max
HSJ	4"	50.0	100'	500°F	125.0	23'	400°F
HS1	4"	150.0	35'	500°F	300.0	4'	300°F
	6"	150.0	100'	500°F	300.0	30'	300°F
HS2	6"	350.0	100'	500°F	600.0	15'	300°F
	8"	350.0	100'	500°F	600.0	67'	300°F
HS3	8"	450.0	100'	300°F	700.0	7'	300°F
	10"	450.0	100'	300°F	700.0	21'	300°F
HS4	8"	700.0	100'	300°F	1200.0	5'	300°F
	10"	700.0	100'	300°F	1200.0	14'	300°F
	12"	700.0	100'	300°F	1200.0	34'	300°F
HS5	10"	1200.0	100'	300°F	1825.0	29'	300°F
	12"	1200.0	100'	300°F	1825.0	72'	300°F
	14"	1200.0	100'	300°F	1825.0	100'	300°F

Model	MBtuH Input	Gas Atmospheric		Gas Power Burner		Gas Power Burner w/ Barometric Damper		Oil Flame Retention w/ Barometric Damper	
		Max. Lgth.	Duct Diam.	Max. Lgth.	Duct Diam.	Max. Lgth.	Duct Diam.	Max. Lgth.	Duct Diam.
PAI-3	150	100	6	100	6	100	6	100	6
	200	100	6	100	6	100	6	100	6
	250	100	6	100	6	100	6	100	6
	275	100	8	100	6	100	6	100	6
PAI-4	300	100	8	100	6	100	6	100	6
	350	100	8	100	6	100	6	100	6
	400	100	8	100	6	100	8	100	6
	450	52	10	100	6	100	8	100	6
PAI-5	500	100	10	100	8	98	6	100	8
	550	100	10	100	8	100	8	100	8
	600	100	10	100	8	100	8	100	8



Model PAI-5

HEAT CONTROLS

TJERNLUND MODEL SELECTION TABLE

Notes

- If the appliance flue outlet is greater than 4", install a tapered reducer after the draft hood, draft diverter or barometric draft control, reducing vent pipe diameter to 4". All vent pipe from the appliance to the Power venter may be 4"
- The table below is based on straight vent pipe. 90° elbows are equivalent to 6 feet of straight vent pipe
- Determine maximum pipe length from type of equipment being vented and GPAK model:

Column A pipe runs over 30 linear feet should use Type "B" vent.

Column B&C pipe runs over 15 linear feet should use Type "B" vent

- Column C allows for up to a 40 MBtuH input atmospheric water heater common vented with a fan assisted appliance from Column B
- Vent pipe and pipe accessories to be supplied by installer

Models Diam.	Vent Pipe Input	MBtuH A Ft.	Atmospheric B Ft.	Fan Assisted C Ft.	*40,000ATM +Column B
GPAK-J	4	45	100	60	60
GPAK-J*	4	75	100	60	60
GPAK-JT	4	100	100	60	N/A
GPAK-JT*	4	120	45	60	N/A
GPAK-1	4	100	100	60	60
GPAK-1*	4	120/150	100	60	60
GPAK-1T	4	200	87	N/A	N/A
GPAK-1T*	4	250	40	N/A	N/A

*Models include 4" draft control and are eligible for HTPP replacement program



DRAFT CONTROLS FIELD CONTROL COMPANY



RC



CAS-2

Part #	Description
5RC	5" Barometric Draft Control w/ Collar for Draft Settings .02" to .08"
6RC	6" Barometric Draft Control w/ Collar for Draft Settings .02" to .08"
7RC	7" Barometric Draft Control w/ Collar for Draft Settings .02" to .08"
8RC	8" Barometric Draft Control w/ Collar for Draft Settings .02" to .08"
9RC	9" Barometric Draft Control w/ Collar for Draft Settings .02" to .08"
CAS-2B	Beckett AirBoot Kit for Oil Burner Intake Air
CAS-2C	Carlin AirBoot Kit for Oil Burner Intake Air
CAS-1	Combustion Air System
CAS-3	Fan in a Can 110v Oil System

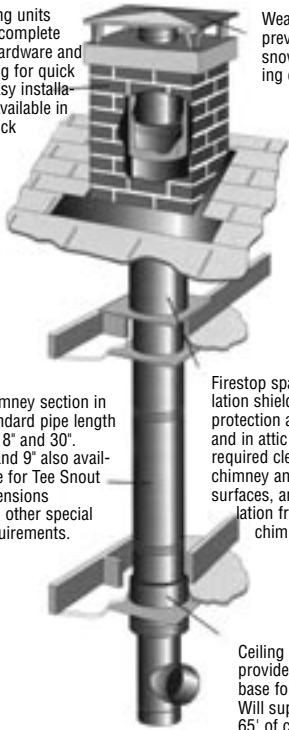
CAS Fan in a Can Sizing

CAS-3 Oil GPH	Max. Equiv. Ft. 4" Duct w/ Restrictor	Max. Equiv. Ft. 4" Duct	Max Equiv. Ft. 6" Duct
.25	282	273	293
.50	233	248	276
.75	180	222	262
.90	124	194	247
1.00	64	165	232
1.25		136	217
1.35		106	202
1.55		75	186
1.75		43	171
2.00			141
2.50			110
2.75			80
3.25			49

HEAT CONTROLS

TD 2100°F ALL FUEL CHIMNEY PARTS METLVENT

Housing units come complete with hardware and flashing for quick and easy installation. Available in red brick.

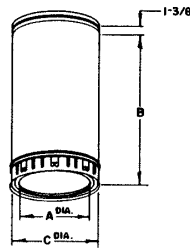


Weather cap prevents rain or snow from entering chimney.

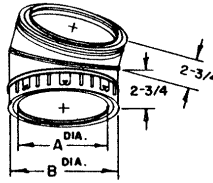
Chimney section in standard pipe length of 18" and 30". 6" and 9" also available for Tee Snout extensions and other special requirements.

Firestop space and attic insulation shield offers complete protection at ceiling joists, and in attic areas. Maintains required clearance between chimney and combustible surfaces, and prevents insulation from contacting chimney.

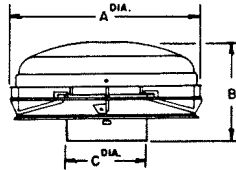
Ceiling support provides sturdy base for chimney. Will support up to 65' of chimney.



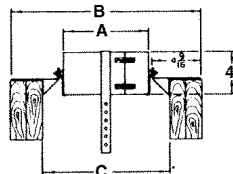
TDP



TDEL

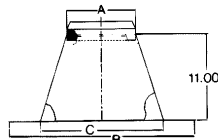


TDC

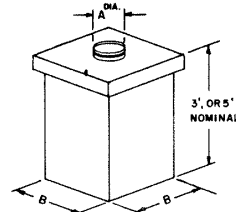


TDRS

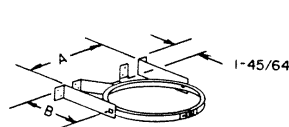
Roof Support will support 30'



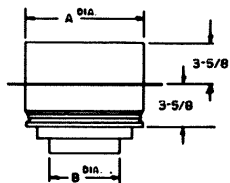
TDWB



TDRS

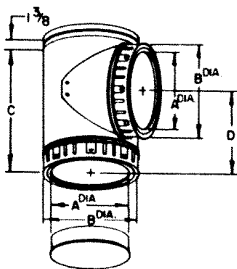


TDWB

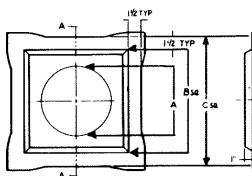


TDSC

Galv. Finish to be used to extend insulated pipe below the support



TDIT



TDFS

Part #	"A"	"B"	"C"	"D"
TDP 6" Pipe	6	6	8	
	6	9	8	
	6	18	8	
	6	30	8	
TDP 7" Pipe	7	6	9	
	7	9	9	
	7	18	9	
	7	30	9	
TDP 8" Pipe	8	6	10	
	8	9	10	
	8	18	10	
	8	30	10	
TDP 10" Pipe	10	6	12	
	10	9	12	
	10	18	12	
	10	30	12	
TDIT 6" Tee	6	8	18	9
TDIT 7"	7	9	18	9
TDIT 8"	8	10	18	9
TDIT 10"	10	12	18	9 1/2
TDEL 6" 15° Elbow	6	8		
TDEL 7"	7	9		
TDEL 8"	8	10		
TDC 6" Topper	14 1/8	7 1/4	6	
TDC 7"	15 1/8	7 11/32	7	
TDC 8"	18 1/8	7 9/16	8	
TDC 10"	23	9 1/2	10	
TDSC 6" Ceiling Support	10	6 1/4		
TDSC 7"	11	7 1/4		
TDSC 8"	12	8 1/4		
TDSC 10"	14	10 1/4		
*Will support 65' of pipe				
TDFS 6" Firestop	8 1/8	10	15	
TDFS 7"	9 1/8	11	16 1/4	
TDFS 8"	10 1/8	12	17	
TDFS 10"	12 1/8	16	19 1/4	
TDWB 6" Wall Band	8 5/8	6		
TDWB 7"	9 5/8	6		
TDWB 8"	10 5/8	7		
TDWB 10"	12 5/8	8		
*One for each 8' of chimney				
TDRS 6" Roof Support	8	17 7/8	12	
TDRS 7"	9	18 7/8	13	
TDRS 8"	10	19 7/8	14	
TDRS 10"	12	21 7/8	16	

Part/Description	6	7	8	10
TDPA Single Wall Pipe Adapter	**	**	**	**
TDAP Masonry Anchor Plate	**	**	**	**
TDSB Support Band-For Chimneys ext.5' or more above roof	**	**	**	**
TDS Storm Collar	**	**	**	**
TDF Adj.Roof Flashing 1/12-6/12	**	**	**	**
TDFA Adj.Roof Flashing 7/12-12/12	**	**	**	**
TDTF Tall Cone Flashing	**	**	**	**

HEAT CONTROLS

B-VENT CHIMNEY PARTS METLVENT



RC

Metal Cap 14"-24"



RWT

Wall Thimble



RF

Adj. Roof Flashing
Flat 6/12



RTF

Tall Cone
Roof Flashing



RFS

Firestop Spacer



RPA

Adjustable Length



REA 90°

Adjustable Elbow



RT

Tee



RTC

Tee Cap



RS

Storm Collar 3"-6"

Part	Description	3	4	5	6	7	8	10	12	14	16	18	20
*RP5	Pipe 5'	*	*	*	*	*	*						
*RP4	Pipe 4'	*	*	*	*	*	*						
*RP3	Pipe 3'	*	*	*	*	*	*	*	*				
*RP30	Pipe 30"								*	*	*	*	
*RP24	Pipe 2'	*	*	*	*	*	*	*	*	*	*	*	*
*RP18	Pipe 18"	*	*	*	*	*	*	*	*	*	*	*	*
*RP12	Pipe 1'	*	*	*	*	*	*	*					
*RP6	Pipe 6"	*	*	*	*								
*REA90	90° Adj.Elbow	*	*	*	*	*	*						
*RE45	45° Adj.Elbow	*	*	*	*	*	*	*	*	*	*	*	*
*RT	Tee	*	*	*	*	*	*	*	*	*	*	*	*
*RTC	Cap	*	*	*	*	*	*	*	*	*	*	*	*
*RSA	Support Assembly	*	*	*	*	*	*	*	*	*	*	*	*
*RWB	Wall Bracket	*	*	*	*	*	*	*	*	*	*	*	*
*RF	Adj.Roof Flash. 0-6/12	*	*	*	*	*	*	*	*	*	*	*	*
*RFA	Adj.Roof Flash. 6-12/12	*	*	*	*	*	*						
*RTF	Tall Cone Roof Flash.	*	*	*	*	*	*	*	*	*	*	*	*
*RS	Storm Collar	*	*	*	*	*	*	*	*	*	*	*	*
*RPC	Pipe Collar	*	*	*	*	*	*						
*RA	Univ.Adapter Male	*	*	*	*	*	*						
*RRA	Univ.Adapter Fem.	*	*	*	*	*	*						
*RDH	Draft Hood Connector	*	*	*	*	*	*	*	*	*	*	*	*

* = Diameter Size

• See page 0 for B-Vent sizing tables

HEAT CONTROLS



Z-VENT III AL249C STAINLESS-VENT Z-FLEX

Features:

- Gasketed connections-no clamps or sealant required
- No cure time needed
- Pipes snap together-no drilling or screws required
- Pipe can be cut to length in field to save time
- Available in 6" to 10' lengths
- Can be installed with 1" clearance to combustibles



Part#	Description	Diameter	Length	Height
02SVEDWC3	Horiz. Drainpipe	3	8 1/2"	
02SVEDWC4	Horiz. Drainpipe	4	10 1/2"	
02SVEVWC03	Vertical Draintee	3	7 1/2"	
02SVEVWC04	Vertical Draintee	4	7 1/2"	
02SVEEWC0345B	45° Elbow	3	8 1/4"	
02SVEEWC0445	45° Elbow	4	8 1/4"	
02SVEEWC0390B	90° Elbow	3	8 1/4"	
02SVEEWC0490	90° Elbow	4	7 1/4"	
02SVSTTX03	Termination	3	6 1/4"	6
02SVSTTX04	Termination	4	9 1/4"	7

Part#	Description	Diameter	Length
02SVEPWC03	Pipe	3	6"
02SVEPWC03	Pipe	3	12"
02SVEPWC03	Pipe	3	18"
02SVEPWC03	Pipe	3	2'
02SVEPWC03	Pipe	3	3'
02SVEPWC03	Pipe	3	4'
02SVEPWC03	Pipe	3	5'
02SVEPWC03	Pipe	3	8'
02SVEPWC03	Pipe	3	10'
02SVEPWC04	Pipe	4	6"
02SVEPWC04	Pipe	4	12"
02SVEPWC04	Pipe	4	18"
02SVEPWC04	Pipe	4	2'
02SVEPWC04	Pipe	4	3'
02SVEPWC04	Pipe	4	4'
02SVEPWC04	Pipe	4	5'
02SVEPWC04	Pipe	4	8'
02SVEPWC04	Pipe	4	10'

CHIMNEY LINER KITS Z-FLEX



Chimney Liner Kits

- All kits include liner, chimney flashing, rain cap, & storm collar. All fuel kits also includes Type "A" connector, tee section, and liner support.
- Aluminum kits are 2-ply and are for Category I gas heating equipment only!
- Oil, Gas, & Pellet ("SS") kits are stainless steel. Add insulation if lining wood chimney.
- All fuel kits ("AF") are approved for all Category I fuels.

Code	Dia.	Lgth.
*325	3	25
*335	3	35
*310E	3	10
*425	4	25
*435	4	35
*410E	4	10
*525	5	25
*535	5	35
*510E	5	10
*625	6	25
*635	6	35
*610E	6	10
*725	7	25
*735	7	35
*710E	7	10
*825	8	250
*835	8	350
*810E	8	10

* Prefix Aluminum "A", Stainless "SS", All Fuel "AF"

See page 140 for chimney liner sizing.

VENTINOX®

CHIMNEY LINING VENTINOX



Lining Kits

VENTINOX®HiFlex, for fireplaces, wood and pellet burning applications

- Warranted even after a chimney fire.
- Titanium stabilized Type 321 ss resists corrosion at high temperatures
- Alloy is so heat resistant it is typically used in aircraft after-burners

VENTINOX®VG for gas burning appliances can withstand corrosive elements and condensates typical in gas flues.

- Type AL29-4C ss has extreme resistance to chloride pitting,

crevice corrosion, stress corrosion and cracking. This steel is typically used in power plant condensers and heat exchangers

VENTINOX®VFT

- Made from Type 316Ti ss.
- Withstands corrosive elements and temperatures typical for oil and gas vent systems. 316Ti ss will withstand wood burning temperatures. Typically used in marine chemical environments, pressure vessels and chemical storage tanks
- Every VENTINOX® system is backed by our limited lifetime warranty

- Available in 3"-12" diameters.
- 3"- 9" in custom cut lengths up to 150'.
- 10"- 12" diameter VENTINOX® VFT comes in 5" increments up to 20" lengths.
- 3"- 6" VENTINOX® VFT (25' long coils) and 7"-8" VENTINOX® VFT are available pre-boxed for UPS shipping.
- 3"- 8" VENTINOX® VFT (25" & 35' long coils) liner kits are available pre-boxed for UPS shipping.
- Liner kits include: Liner, top plate and raincap with storm collar

Features:

- Continuous weld construction
- Pop Rivet free construction
- Precision engineered spiral corrugations
- UL Listed and tested
- Proudly made in the US since 1979
- Exclusive 'Fasclamp' components offer the easiest, fastest installation
- Lifetime Warranty



Coupler



45° Adj. Elbow



Sleeve



90° Adj. Elbow



Tee Cover



Tee w/Removable sleeve

Description	Part Number Prefix	3" through 12" followed by	3" through 12" as needed
Ventinox VFT Coupler	VCP VFT		3-12
Ventinox VFL Coupler	VCP VFL		3-12
Ventinox VG Coupler	VCP VG		3-12
Ventinox VFT 45° Adj Elbow	VEL45 VFT		3-12
Ventinox VFL Adj Elbow	VEL45 VFL		3-12
Ventinox VG Adj Elbow	VEL45 VG		3-12
Ventinox VFT 90° Adj Elbow	VEL90 VFT		3-12
Ventinox VFL 90° Adj Elbow	VEL90 VFL		3-12
Ventinox VG 90° Adj Elbow	VEL90 VG		3-12
Ventinox VFT Sleeve	VSL VFT		3-12
Ventinox VFL Sleeve	VSL VFL		3-12
Ventinox VG Sleeve	VSL VG		3-12
Ventinox VFT Tee w/snout*	VTE VFT		3-12
Ventinox VFL Tee w/snout*	VTE VFL		3-12
Ventinox VG Tee w/snout*	VTE VG		3-12
*removable for easier installation.			
Ventinox VFT Tee Cover	VTC VFT		3-12
Ventinox VFL Tee Cover	VTC VFL		3-12
Ventinox VG Tee Cover	VTC VG		3-12

HEAT CONTROLS

RESIDENTIAL GAS BRADFORD WHITE

Features:

- Piezo Igniter
- Advanced ScreenLok™ Technology Flame
- Arrestor Design
- Resettable Thermal Switch
- Pedestal Base
- Maintenance Free
- Sight Window
- Vitraglas® lining.
- Protective magnesium anode rod.
- 6 year limited warranty on component parts
- 6 to 10 year limited tank warranty

Model Direct Vent	Gal. Cap.	Input MBtuH	GPH 90° Rise	Diam. Size	Floor to Center of Vent	Vent Size	Height	Wgt.
DS1-40S6BN	40	38.0	41	20	63 ¹ / ₂ MIN	3-5	49 ³ / ₄	162
DS1-50S6BN	50	42.0	45	20	72 ¹ / ₄ MIN	3-5	58 ³ / ₄	181

Model Through-the-Wall	Gal. Cap.	Input MBtuH	GPH 90° Rise	Diam. Size	Floor to Flue Conn.	Vent Size	Floor to Water Conn.	Wgt.
M-II-TW-50T6EN	48	65.0	70	22	66 ⁷ / ₈	3	56 ¹ / ₂	188
M-II-TW-65T6EN	65	65.0	70	22	72 ¹ / ₈	3	62 ¹ / ₂	222
M-II-TW-75T6CN	75	75.0	81	26	71 ⁵ / ₈	3	61 ¹ / ₄	277

Model Upright	Gal. Cap.	Input MBtuH	GPH 90° Rise	Diam. Size	Floor to Flue Conn.	Vent Size	Floor to Water Conn.	Wgt.
M-I-30T6FBN	30	32.0	33	16	59 ¹ / ₈	3	57 ¹ / ₂	104
M-I-30S6FBN	30	30.0	31	18	48 ³ / ₈	3	46 ³ / ₄	100
M-I-303T6FBN	29	40.0	41	16	58	3	56 ¹ / ₂	109
M-I-40T6FBN	40	40.0	41	18	59 ³ / ₈	3	57 ³ / ₄	120
M-I-403S6FBN	40	40.0	41	20	50	3	48 ¹ / ₂	128
M-I-404T6FBN	40	48.0	51	18	41	4	58 ¹ / ₂	127
M-I-5036FN	42	40.0	41	20	59 ³ / ₈	3	58	145
M-I-50L6FBN	48	40.0	41	22	49 ³ / ₄	3	48 ¹ / ₂	153
M-I-504S6FBN	50	48.0	51	20	58 ¹ / ₂	4	57	150
M-I-75S6BN	75	76.0	78	24 ¹ / ₂	63	4	61 ¹ / ₄	264
M-I-100T6BN	100	85.0	92	28 ¹ / ₄	68 ¹¹ / ₁₆	4	65 ¹¹ / ₁₆	420

Model Upright D. Vent Closed Combustion	Gal. Cap.	Input MBtuH	GPH 90° Rise	Diam. Size	Floor to Flue Conn.	Vent Size	Height	Wgt.
M-I-MS30T6LX	30	30.0	31	16	56 ¹ / ₄	3	56 ¹ / ₄	106
M-I-MS40T6LX	40	30.0	31	18	56 ³ / ₄	3	56 ³ / ₄	126



M-I-MS



M-I-30



M-II-TW

HEAT CONTROLS



RESIDENTIAL ELECTRIC WATER HEATER JOHN WOOD

Features:

- TankSaver Design
- Doubled Glassed Main Seam Weld
- Factory Installed Nipples
- Galvanized bottom Pan
- 1 Year Limited Warranty**

Model	Gal. Cap.	Energy Factor	1st Hour Rating	GPH 90° Rise	Diam.	Height	Insulation	Wgt.
Lowboy								
JW630LDE	30	0.90	43	20.1	22	31 ³ / ₄	R16	108
JW640LDE	40	0.89	48	20.1	24	32 ¹ / ₂	R16	128
JW650LDE	46	0.88	62	20.1	26	31 ³ / ₅	R16	140
Standard								
JW630SDE	30	0.90	44	20.1	20	36 ¹ / ₂	R16	115
JW640SDE	40	0.89	54	20.1	20	47	R16	123
JW650SDE	50	0.87	66	20.1	22	46 ³ / ₅	R16	136
JW666SDE	66	0.86	78	20.1	24	49 ¹ / ₅	R16	152
JW680SDE	80	0.85	90	20.1	24	59	R16	201
Tall								
JW640TDE	40	0.88	61	20.1	18	59	R16	119
JW650TDE	50	0.87	70	20.1	20	56 ⁴ / ₅	R16	151
Energy Efficient								
JW650TDE3	50	0.93	70	20.1	22	58 ³ / ₄	R25	151
JW680SED3	80	0.91	90	20.1	26	60 ⁷ / ₁₀	R25	201



JW640SDE

OIL-FIRED WATER HEATER JOHN WOOD

Model	Gal. Cap.	Firing Rate	Input MBtuH	1st Hour Rating	GPH 90° Rise	Diam.	Vent Size	Height	Combustion Efficiency	Tube Insertion Length	Wgt.
Center Flue											
JWF307	32	0.65	90.0	108	92	20	6	52	77-80%	4 ³ / ₄	169
JWF507	50	0.75	106.0	125	108	22	6	58 ¹ / ₂	77-80%	5 ³ / ₄	224
JWF657	63	1.00	138.5	163	144	26	6	65 ³ / ₈	82-86%	7 ³ / ₄	357
Direct Vent											
JWF307V	32	0.65	90.0	108	92	N/A	N/A	N/A	79-81%	4 ³ / ₄	N/A
Rear Flue											
JW317/327	30	0.75	106.0	120	111	24	6	60 ³ / ₄	84-85%	7	230
JW517/527	50	0.85	119.0	147	130	28	7	63 ¹ / ₂	84-85%	7	352
JW717/727	70	1.00	138.5	202	158	67	7	67	84-85%	7	455

Features:

- TankSaver Design
- Doubled Glassed Main Seam Weld
- Factory Installed Nipples
- Galvanized bottom Pan
- 1 Year Limited Warranty**



JW717/727

HEAT CONTROLS



GAS WATER HEATER JOHN WOOD

Features:

- TankSaver Design
- Doubled Glassed Main Seam Weld
- Factory Installed Nipples
- Galvanized bottom Pan
- 1 Year Limited Warranty**

Model	Gal. Cap.	Input MBtuH	GPH 90° Rise	Diam.	Height	Vent Size	Energy. Factor
Standard							
6G19S	19	22.0	20.6	18	37 ¹ / ₅	3	N/A
JW630S	30	30.0	30.7	18	49 ⁷ / ₁₀		0.58
JW640S	40	38.0	33.8	20	51		0.56
JW650S	50	40.0	40.9	22.0	51 ¹ / ₂		0.53
JW6660S	60	40.0	40.9	22.0	59 ⁷ / ₁₀		0.52
JW66052	60	52.0	52.7	22.0	62 ⁷ / ₁₀	4	0.52
JW66058	60	58.0	54.7	22.0	62 ⁷ / ₁₀	4	0.51
JW630T	30	30.0	30.7	16.0	60	3	0.58
JW640T	40	33.0	33.8	18.0	60 ⁴ / ₅	3	0.56
JW64040T	40	40.0	40.9	18.0	63	3	0.57
JW650T	50	40.0	40.9	20.0	60	3	0.55
JW67575	75	75.0	75.4	24.0	62 ⁷ / ₁₀	4	0.48
Power Vent							
JW640SNV	40	33.0	33.8	20.0	58.4	3	0.57
JW650SNV	50	36.0	38.6	22.0	59.0	3	0.55



JW64040T

STORAGE BOOSTER TANKS JOHN WOOD

Model	Gal. Cap.	Tank Style	Dimensions HxW	Domestic Connects	Work Press	Wgt.
JW5-40SB	40	Glass Lined	47x20	³ / ₄	150	123
JW5-50SB	50	Glass Lined	47x22	³ / ₄	150	136
JW5-80SB	80	Glass Lined	59x24	³ / ₄	150	201

Features:

- TankSaver Design
- Doubled Glassed Main Seam Weld
- Factory Installed Nipples
- Galvanized bottom Pan
- 1 Year Limited Warranty**

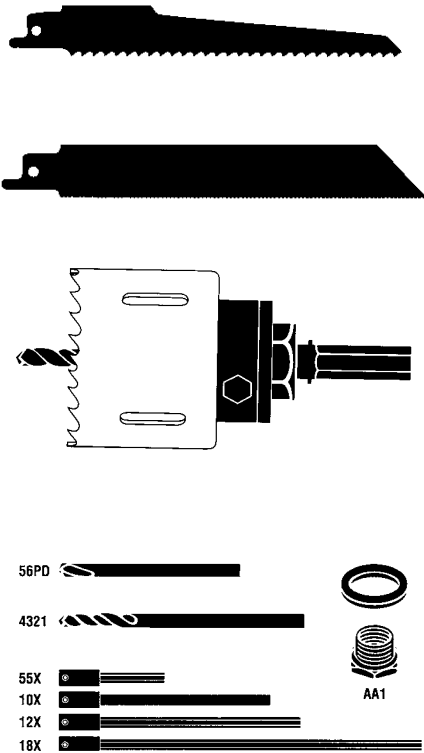


JW5-40SB

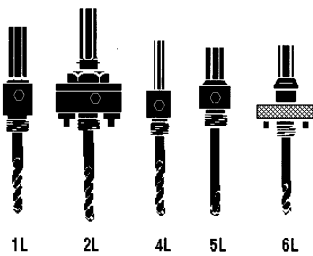
HEAT CONTROLS



SAW BLADES AND DRILL BITS LENOX



Item	Description
Recip. blade for rough-in work and nail embedded wood.	
156R	12 x 3/4" Wood Blade 6 Teeth per Inch (tpi) 5p
656R	6 x 3/4" Wood Blade 6tpi 5p
Recip. Blade for pipe, structural steel, stainless steel, & conduit.	
410R	4 x 3/4" 18tpi 5p
418R	4 x 3/4" 18tpi 5p
610R	6 x 3/4" 10tpi 5p
614R	6 x 3/4" 14tpi 5p
618R	6 x 3/4" 18tpi 5p
624R	6 x 3/4" 24tpi 5p
1L	Arbor: Hex Shank, for 9L-19L saws, 1/2 chuck
2L	Arbor: Hex Shank, for 20L-96L saws, 1/2 chuck
4L	Arbor: Round Shank, for 9L-96L saws, 1/2 chuck
5L	Arbor: Hex Shank, for 9L-19L saws, 3/8 chuck
6L	Arbor: Hex Shank, for 20L-96L saws, 3/8 chuck
4321	Pilot Drill for 1L, 2L, 4L Arbor
56PD	Pilot Drill for 5L, 6L Arbor
AA1	Arbor Adapter for 1L, 4L, 5L
18X	18 Extension
12X	12 Extension
10X	10 Extension
55X	5 1/2" Extension
VB1	Vari-Bit Step Drill 1/8 - 1/2 13 Steps, 1/4 Drill
VB2	Vari-Bit Step Drill 1/2 - 15/16 9 Steps, 3/8 Drill
VB3	Vari-Bit Step Drill 1/4 - 3/4 9 Steps, 3/8 Drill
VB4	Vari-Bit Step Drill 3/16 - 1/2 6 Steps, 3/8 Drill



Description	5/8	3/4	7/8	1	1 1/8	1 1/4	1 3/8	1 1/2	1 5/8	1 ?	2	2 1/8	2 1/4	2 5/8	3	3 5/8	4 3/4
Hole Saw Pt.#	10L	12L	14L	16L	18L	20L	22L	24L	26L	28L	32L	34L	36L	42L	48L	58	76L
Arbor	&	&	&	&	&	&&	&&	&&	&&	&&	&&	&&	&&	&&	&&	&&	&&
Feeder Bit Pt.#				100	112	125	137	150		175	200	212	225	256	300	362	462

& - For use with 1L, 4L, or 5L arbor
 && - For use with 2L or 6L arbor

HEAT CONTROLS



HAND TOOLS MALCO



TY4



Max 2000 Series



S2



C5

Tool	Description
A00	Scratch Awl 1/8"x5 1/2"
A0	Scratch Awl 1/8"x6 1/2"
A10	Scratch Awl 3/16"x7 1/4"
A1	Scratch Awl 7/32"x5 1/4" (lg. Handle)
A20	Scratch Awl 1/4"x7 1/4"
A2	Scratch Awl 1/4"x6 1/4" (lg. Handle)
A3	Scratch Awl 3/8"x7 1/2" (lg. Handle)
A50	Carbide Tipped Scriber
A50R	Replacement Tip for A50
18	Divider 36" Max
24	Divider 48" Max
TR42	Trammel Point
DK1	Duct Knife (double edge fiberglass)
FDC1	Flex Duct Cutter
FG1	Ductboard Hole Cutter
HC1	Metal Hole Cutter
CB	Cutting Bit
HC1B	Pivot Pin-set for HC-1
C5	Crimper 5 Blade
CG10	Caulking Gun
S2	Seamer 3-1/4" Blade
S3	Offset Seamer 3-1/4" Blade
S6	Seamer 6" Blade
N1	Notcher
8	Folding Tool 8"; 3/8" & 1/2" Fold Depth
12	Folding Tool 12"; 3/8" & 1/2" Fold Depth
12F	Folding Tool 12"; 3/8" & 1" Fold Depth
18	Folding Tool 18"; 3/8" & 1/2" Fold Depth
18F	Folding Tool 18"; 3/8" & 1" Fold Depth
24F	Folding Tool 24"; 3/8" & 1" Fold Depth
DS1	Duct Stretcher
DS.2	Duct Stretcher Offset
DS1C	Repair Kit
TY4	Manual Cut-off Tie Tool
TY4G	Gripped Manual Cut-off Tie Tool
TY6	Tension Tool w/Auto Cut-off
M2001	Red Av Snip Left
M2002	Green Av Snip Rgt.
M2003	Yellow Av Combo
M2005	Red Bulldog
Zs1R	Red Offset Left
ZS2R	Green Offset Rgt.
M15	Pattern Snip 16-1/2"
FGSLK	Ductboard Kit Shiplap
FG1	Ductboard Hole Cutter
D5AS	5" Single Bearing Damper
D6AS	6" Single Bearing Damper
D7HTA	7" Double Bearing Damper
D8FTA	8" Double Bearing Damper

Tool	Description
RH4	12 pz. Riveting Hammer
SH3	18 oz. Setting Hammer
48BS	48" Circumference Rule
606F	6' Wood Folding Rule
T312	12'x3/4" Power Return Tape
T316	16'x3/4" Power Return Tape
T425	25'x1" Power Return Tape
L5	5" Pocket Level
L9M	9" Magnetic Torpedo Level
L24ATM	24" Magnetic Base Level
MSH14	1/4"x1 3/4" Magnetic Drill Chuck
MSH516	5/16"x1 3/4" Magnetic Drill Chuck
MSH38	3/8"x1 3/4" Magnetic Drill Chuck
MSHL516	5/16"x2 1/2" Magnetic Drill Chuck
MSHXL14	1/4"x6" Magnetic Drill Chuck
ND8	Red 1/4"x7 1/4" Hollow Nut Driver
ND8S	Red 1/4"x3 1/4" Stubby Nut Driver
ND10	Amber 5/16"x7 1/4" Hollow Nut Driver
ND10S	Amber 5/16"x3 1/4" Stubby Nut Driver
ND12	Blue 3/8"x7 1/4" Hollow Nut Driver
HW812C	Malco Zip-in #8x1/2" 100c.
HW812T	Malco Zip-in #8x1/2" 1000c.
HW812B	Malco Zip-in #8x1/2" 12000c.
HW834C	Malco Zip-in #8x3/4" 100c.
HW834T	Malco Zip-in #8x3/4" 1000c.
HW834B	Malco Zip-in #8x3/4" 10000c.
HW81C	Malco Zip-in #8x1" 100c.
HW81T	Malco Zip-in #8x1" 500c.
HW81B	Malco Zip-in #8x1" 7000c.
HW815C	Malco Zip-in #8x1 1/2" 100c.
HW815T	Malco Zip-in #8x1 1/2" 250c.
HW82T	Malco Zip-in #8x2" 250c.
HW82B	Malco Zip-in #8x2" 2300c.
BT131	Bit-Tip #8x1/2" 1/4" Head 500c.
BT133	Bit-Tip #8x3/4" 1/4" Head 10000c.
BT231	Bit-Tip #8x3/4" 1/4" Head 500c.
BT233	Bit-Tip #8x3/4" 1/4" Head 500c.
BT233B	Bit-Tip #8x3/4" 1/4" Head 10000c.
BT141	Bit-Tip #10x1/2" 5/16" Head 500c.
BT141B	Bit-Tip #10x1/2" 5/16" Head 10000c.
BT143	Bit-Tip #10x3/4" 5/16" Head 500c.
BT143B	Bit-Tip #10x3/4" 5/16" Head 7000c.
SS42DJ	Stls Stl 1/8" Rivet, .250" Head 1000c.
SS44DJ	Stls Stl 1/8" Rivet, .250" Head 1000c.
AS42J	Alum 1/8" Rivet, .250" Head 1000c.
AS44J	Alum 1/8" Rivet, .250" Head 1000c.



HC1



18F



SH3

HEAT
CONTROLS

TORCHES AND ACCESSORIES TURBOTORCH

Swirl Air Acetylene Tips & Components

Tip No.	Tip Size @14 PSI Ft. ³ /Hr.	Gas flow Soft Solder	Copper Tubing Silver Solder	Size Capacity	Repl. Orifice Model
A-2	1/8	2.0	1/8 - 1/2	1/8 - 1/4	OR-A2
A-3	3/16	3.6	1/4 - 1	1/8 - 1/2	OR-A3
A-5	1/4	5.7	3/4 - 1 1/2	1/4 - 3/4	OR-A5
A-8	5/16	8.3	1 - 2	1/2 - 1	OR-A8
A-11	7/16	11.0	1 1/2 - 3	7/8 - 1 5/8	OR-A11

Part No.#	Description
SA	Snappy Adapter screws on threaded handles adapting it to the Turbo Torch Quick Disconnect tips
PL-5A DLX-B Kit	Includes regulator, handle, hose and tip soft solders to 1 1/2" silver solders to 3/4" w/instruction manual (for "B" tanks)
X-3B Kit	Brazes light/medium gauge steel includes regulator, hose, handle, A-3 & A-11 tips soft solders to 3" silver brazes to 1 5/8" w/instruction manual
X-5B Kit	Flexible lighter duty kit same as X-3B Kit except has A-5 tip soft solders to 1 1/2" silver brazes to 3/4" w/instruction manual
X-6MC Kit	All purpose kit includes regulator, handle, hose, A-3, A-8 tips soft solders to 2" silver solders to 1" w/instruction manual (for "MC" tanks)
AR-MC	Fixed Pressure Regulator-all brass construction w/contents gauge. 3/8" 24-thread LH hose nut.
AH-12	3/16 ID acetylene hose with 3/8" 24-thread LH nuts. 12ft. length
AH-24	Same as above, 24 ft. length
G-4	Turbo-Torch handle with valve and quick disconnect-fits all Turbo-Torch and Proline tips 3/8" 24-thread size hose connection

MAPP® & Propane Tips and Components

Tip No.	Tip Size @24 PSI Lbs./Hr.	Gas flow	Copper Tubing Size Capacity Propane		Copper Tubing Size Capacity MAPP		Replacement Orifice Model
			Soft Solder	Silver Solder	Soft Solder	Silver Solder	
T2	5/16"	.14	1/8 - 1/4"	1/16 - 1/4"	1/8 - 1/2"	1/8 - 1/4"	OR-A2
T3	7/16"	.20	1/4 - 1"	1/8 - 1/2"	1/4 - 1 1/2"	1/4 - 1/2"	OR-T3

STK-99 Kit	Includes STK-R regulator, ST-33 tip w/instruction manual
PT-1	Propane replacement tank for use with all Turbo-Torch hand torches, non refillable
MT-1	MAPP gas replacement tank for use with Turbo-Torch dual fuel hand torches, non refillable
TX-504	Turbolite® Self Lighting Torch Features heavy case, replaceable tip-end, easy to clean orifice, heavy duty piezo ignitor, machined rotor, wide lighting range-replaces TL-3 and TL-4 models
BF-1	Bronzeflow for low fuming bronze. Ideal for maintenance repairs on plumbing and heating 1 lb. and 25lb. package
SF-1	Silverflow wide range use especially for copper tubing. No flux required when using copper to copper; 1lb. or 25lb. packages



SF-1



AH-12



TX-504



AR-MC



MT-1

HEAT
CONTROLS