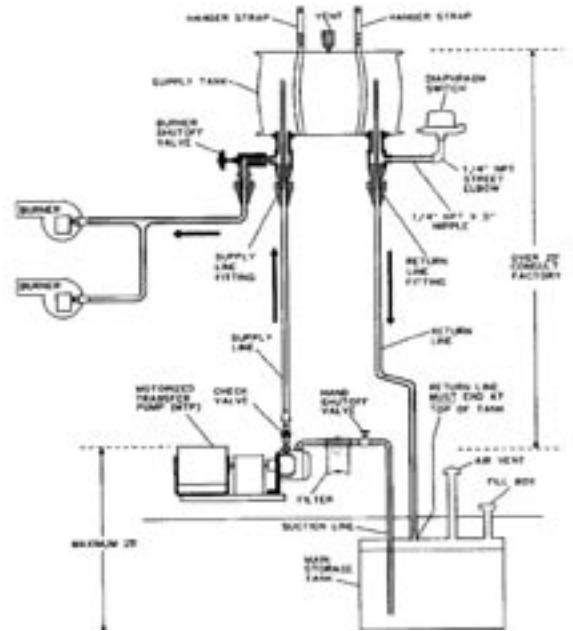


TANK ACCESSORIES MITCO

Model No.	Description
Central Oil Supply System	
P239-1	Complete system for up to 24 gph
P239-2	24 gph pump only
P239-9	Pump and motor set for 24 gph model
P239-10	Vacuum breaker
P239-11	Oil supply switch
P239-14	Tank and fittings
Replacement Parts	
P9-18	Impeller kit for P9-5
156	Cast Iron couplings. 118705(PZ-4291) fit 1/12 hp 1/3 hp boosters
156-2	118473 (PDZ-12291) PD-35, PD-37 w/ 1/2 hp and 3/4 hp
Motor Mounts for B&G(sold in pairs)	
B61	1/6, 1/4 hp motors; 118227
B61-1	1/12 hp motors; 118223 Circulator Nuts and Bolts(set of 4)
B63-30	Flange bolts and nuts for Taco, Harvey, Modern, and most B&G
McDonnell & Miller Accessories	
B122-10	3/4 Ball Valve Blow down Kit
Fuel Oil Pump/Oil Line Accessories	
193-3	SunTec Pump Strainers for A70, 3 pack
P164-4	SunTec Gaskets 50 pack
P165-2	SunTec Gaskets for 70 series cover, 10 pack
P165-3	SunTec Gaskets for 70 series cover, 50 pack
P131-11	Turn-a-Kit Bleed Wrenches, Offset Handle
P131-6	Jiffy Bleed Valve 1/8
P131-7	Jiffy Bleed Valve 1/4
P127-5	18" Copper Nozzle Lines w/ Flare nuts, 3/16 Outer Dia.
P127-6	18" Copper Nozzle Lines w/ Flare nuts, 1/4 Outer Dia.
P127-7	18" Copper Nozzle Lines w/ Flare nuts, 3/16 Outer Dia. x 8
P128	Kwik-Purge II CO ₂ gun. Uses Standard charges.
Micro-Flow Oil Filters	
251-20	10 elements only, Use in: Fulflo B6, AS6, FB6
252-40	6 elements only, Use in: Fulflo B8, AS8, FB8
252-50	4 elements only, Use in: Fulflo B10, AS10, FB10
265-12A	12 elements bagged w/ gaskets, Use in: General 2A-700, Harvey 265, AutoFlo 400, Edco S252, Firomatic RC20
265-1A	Standard Oil Filters, 12 bagged elements, Use in: General 2A-700, Harvey 265, AutoFlo 400, Edco S254
Testing Equipment	
N29-26	Smoke Test Paper, Package of 50 strips. Suitable for: Bacharach, Dwyer testers and "Smoke Check".
E55-50	Amp-Mate Low Voltage Circuit Tester. Accurately measures low voltage control circuits for precise heat anticipator adjustment.
E55-2	TM-20 - Cad Cell Relay & Eye Tester. Enables the user to check, in minutes, both the cad cell relay and cad cell eye, without removing either from the burner.
P115-2	Kwik-Check II - Pressure & Cutoff Tester. Tests pump pressure and cutoff of fuel oil pumps without removing the pump from the burner. Can be used on all pump up to 300psi.
P115	Oil Watcher, Clear tubing adapts to any suction line with fittings provided. Along with the vacuum gauge, able to analyze problems caused by impurities, leaks, and high restrictions.
S5-49	Cleaning tool for removing soot and scale build-up in boilers with narrow passageways.
F2-40	High-Grade oil specially formulated for circular bearing assemblies, centrifugal pumps, electric motors, blowers, and bearings.



P127-5



P164



P193-3



P165-2



P115-2

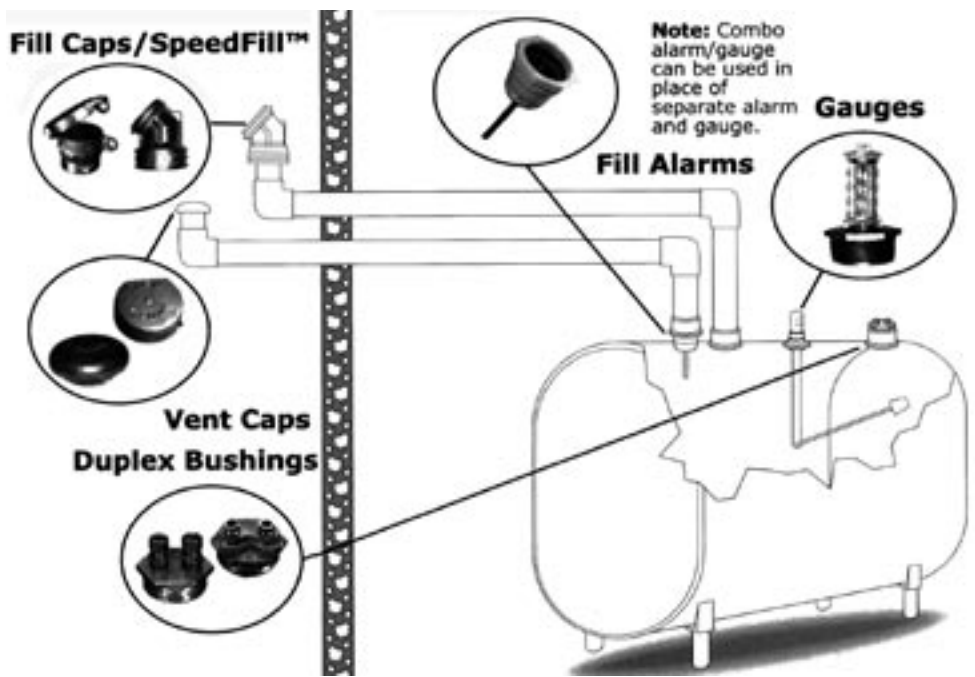


E55-50

HEAT CONTROLS

TANK ACCESSORIES OEM

Model No.	Size	Other
King Fill Alarm & Gauge Combos		
4522	1½ M NPT x 1¼ F NPT	Vertical/Orange
4523	2 x 1¼	Vertical/Red
4524	1½ x 1½	Vertical/Yellow
4525	2 x 1½	Vertical/Grey
4526	2 x 2	Vertical/Blue
4529	1½ x 1¼	Horizontal/Orange
4530	2 x 1¼	Horizontal/Red
4531	1½ x 1½	Horizontal/Orange
4532	2 x 1½	Horizontal/Grey
4533	2 x 2	Horizontal/Blue
King Fill Alarms		
Color		Stem Length/
4508	1¼ x 1	5¼ - Galvanized
4509	1¼ x 1¼	5¼ - Tan
4510	1½ x 1	5¼ - Galvanized
4511	1½ x 1¼	5¼ - Orange
4512	1½ x 1½	5¼ - Yellow
4514	2 x 1¼	5¼ - Red
4515	2 x 1½	5¼ - Grey
4517	2 x 2	5¼ - Blue
4516	2 x 2	9¾ - Green
4518	2 x 2	16¾ - Green
4519	2 x 2	21⅞ - Green
Compression Lock Fill Alarms		
4550	1 x 1	
4542	1¼ x 1¼	
Union Connection fill alarms		
4558	1 x 1	
4560	1¼ x 1¼	
Mushroom Vent Caps		
4021	¾ M NPT	
4022	1 M NPT	
4023	1¼ M NPT	
4024	1½ M NPT	
4025	2 M NPT	
4026	2½ M NPT	
4027	3 M NPT	
4028	4 M NPT	
Zinc Slip-On Cap2		
4006	¾ - 1	
4007	1¼	
4008	1½	
Aluminum Slip-On Cap		
4009	2	
4010	¾	
4011	1	
4012	1¼	
4013	1½	



Model No.	Size	Other
Hinged Fill Caps		
4163	1½ M NPT	
4164	2 M NPT	
4170	1½ F NPT	
4171	2 F NPT	
4173	3 F NPT	
3-Way Tap Slip-Thru Male Compression Fitting		
4468	2	¾ x ¾
4469	2	¾ x ½
4470	2	½ x ½
4471	2	⅝ x ⅝
4472	2	¾ x ¾ Bushing Only
4473	2	½ x ½ Bushing Only
4-Way Tap Slip-Thru Male Compression Fitting		
4475	2	¾ x ¾
4476	2	½ x ½
4477	2	⅝ x ⅝
4478	2	¾ x ½
4479	2	¾ x ¾ Bushing Only
4480	2	½ x ½ Bushing Only
3-Way Tap (Slip-Thru Compression Union)		
4446	1½ M NPT	¾ x ¾
4447	2 M NPT	¾ x ¾
4448	2 M NPT	½ x ½
3-Way Tap (Double Compression Nut)		
4434	2 M NPT	¾ x ¾
SpeedFill Caps		
3100	2 F	Fits all SpeedFill Conn.
3101	2 M	NYC Flush Cap

Model No.	Size	Other
SpeedFill Straight-Cored Conn.		
3216	1½ F	
3221	2 F	
3321	2 F	
SpeedFill Straight Conn.		
3212	1¼ F	
3215	1½ F	
3220	2 F	
3312	1¼ M	
3315	1½ M	
3320	2 M	
SpeedFill 45° Conn.		
3412	1¼ F	
3415	1½ F	
3420	2 F	
3515	1½ M	
3520	2 M	
Heavy Duty Hinged Fill Caps		
6016	2 F NPT	Black Iron
6116	2 F NPT	Galvanized
6017	2 M NPT	Black Iron
6117	2 M NPT	Galvanized
Flush Fill Caps		
4181	1½ F NPT	
4182	2 F NPT	
4183	2½ F NPT	
4184	3 F NPT	
One-Piece Fill Caps		
4040	2 F NPT	Cast Iron
4045	2 F NPT	Aluminum
King combo Gauges and Tank Gauges		
4495	Gauge Vial and (2) Gaskets Kit	



TEST EQUIPMENT BACHARACH

Specifications	BA PCA-20	BA PCA-25
Measurements		
Oxygen	Y	Y
Air Temp	Y	Y
Stack Temp	Y	Y
Carbon Monoxide	Y	Y
Draft	-	Y
NO _x	-	-
Calculations		
Combustion Eff.	Y	Y
Excess Air	Y	Y
Carbon Dioxide	Y	Y
CO (air free)	Y	Y
NO _x (air Free)	-	-
Output Capabilities		
Printer Interface	Y	Y
Customized Printout	10	10
Customer ID	-	-
Computer Interface	-	-

Part Number	Description
19-8004	Monoxor II Carbon Monoxide Analyzer with Case
127012	Red Spirit Sling Psychrometer
133001	Drafrite Gauge
135010	Drafrite Tube Set
198031	Leak Detector Refrigeration



PCA



19-8004

OIL BURNER COMBUSTION TEST KITS BACHARACH

Included in	10-5064	10-0099	10-0100	11-0121	11-7029	11-7032	12-7014	21-7006	12-7018	13-7019	13-7021
10-5036	X		X	X	X	X	X	X			
10-5050	X		X		X	X	X		X		X
10-5022	X	X	X	X	X	X		X	X	X	X



10-099

Carrying Case Small-
Instruments for Bacharach Oil Burner Combustion Testing Kits come in a rugged, plastic carrying case.

10-0100

Carrying Case - Instruments
for Bacharach Oil Burner Combustion Testing Kits come in a rugged, plastic carrying case.

10-5064

Fire Efficiency Finder - The Fire Efficiency Finder Slide Rule is a quick and easy way of determining combustion efficiency and stack loss from the results of the CO₂ and stack temperature tests.

11-0121

Moisture Absorbant Material

11-7032

Fyrite CO₂ 20%-Filled - The Fyrite Carbon Dioxide Indicator measures the percent of CO₂ in a flue gas sample.

11-7029

Sampling Hose Assembly

12-7014

Tempoint Dial Thermometer (6" stem) 1000° - High stack temperatures are cause for special concern and may indicate a serious condition.

12-7018

Tempoint Dial Thermometer (12" stem) 1000° - High stack temperatures are cause for special concern and may indicate a serious condition.

13-7019

MZF Draft, +.05 to -.25"W - Measures overfire and draft.

13-7021

MZF Draft, +.05 to -1.0"W - Measures overfire and draft.

21-7006

True Spot Smoke Tester and Oil Burner Smoke Scale - With the True Spot Smoke Tester and Smoke Scale, you can get an accurate indication of smoke content in flue gas.

HEAT CONTROLS

DELANAN®

BURNER NOZZLES DELAVAN

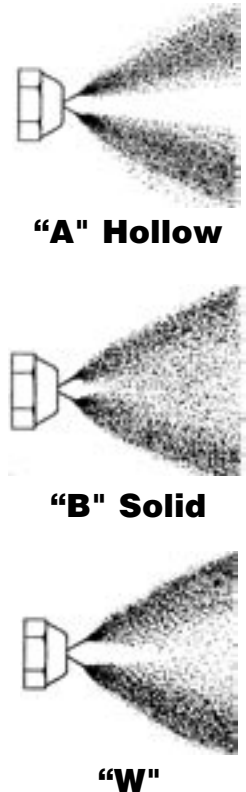
Type A	Type B	Type W	Del-O-Flo	Type SS	Type R&AR	Type W
0.4-50.0GPH	0.4-50.0GPH	0.4-8.0GPH	0.4-0.85GPH	0.5-2.0GPH	0.5-2.0GPH	0.579GPH
Hollow Core Red Vial	Solid Core Blue Vial	Replaces A or B to reduce Problems Green Vial	Low Capacity Plug Resistant Black Vial	Semi Solid Black Vial	AR-Gray Vial R-Charcoal Vial	Mobile Home Orange Vial
Nozzle Rating @ 100 PSI	Flow Rate 120 PSI	Flow Rate 145 PSI	Flow Rate 160 PSI	Flow Rate 175 PSI	Flow Rate 200 PSI	Flow Rate 300 PSI
.40	.44	.48	.51	.53	.57	.69
.50	.55	.60	.63	.66	.70	.86
.60	.66	.72	.76	.79	.85	1.04
.65	.71	.78	.82	.86	.92	1.12
.75	.82	.90	.95	.99	1.05	1.30
.85	.93	1.02	1.08	1.12	1.20	1.47
.90	.99	1.08	1.14	1.19	1.27	1.56
1.00	1.10	1.20	1.27	1.32	1.41	1.73
1.10	1.21	1.32	1.39	1.46	1.55	1.90
1.20	1.31	1.44	1.51	1.59	1.70	2.08
1.25	1.37	1.50	1.58	1.65	1.76	2.16
1.35	1.48	1.63	1.71	1.79	1.91	2.34
1.50	1.64	1.81	1.90	1.98	2.12	2.60
1.65	1.81	1.99	2.09	2.18	2.33	2.86
1.75	1.92	2.11	2.22	2.32	2.48	3.03
2.00	2.19	2.41	2.53	2.65	2.82	3.48
2.25	2.47	2.71	2.85	2.98	3.18	3.90
2.50	2.74	3.01	3.16	3.31	3.54	4.33

Recommended Combustion Chamber Size

Burner Manufacturer's Recommendations*		
Manufacturer	Model	Delavan Nozzle Type
Aero Burner	F-FAFC	80 W or A
	HF US	80 W or A
	HF-AFC	80 W or A
	SV/SSV	80 W or A
R.W. Beckett	AF/AFG(F)	60, 70, or 80 A or B (100-150 PSI)
	AF/AFG(M)	60 or 70 A or B (100-150 PSI)
	AF #	45, 60, 70 A, W, or B (140-200 PSI)
The Carlin Co.	99 FRD (Std.)	.50-.75 GPH 60 A
		.85-3.00 GPH 45 A, 60 A
	100 CRD (Std.)	.50-.75 GPH 60 A
		.85-2.25 GPH 45 A, 60 A
	Elite EZ-1	.75-1.10 GPH 60 A
		.50-1.00 GPH 70 A
		.50-.85 GPH 60 SS
	1.00-1.65 GPH 60 or 70 B	
	Elite (EZ-2, 3)	All Flow Rates 60 A, B, or SS
Riello Burners	Mectron 3M, 5M	60 W, B, or Del-O-Flo A (Up to .85 GPH)
	F3, F3	.40-1.25 GPH 60 or 80 W
	F10	1.25-2.50 GPH 60 W
	F15, F20	2.00-5.00 GPH 45 or 60 B
	R35.3, R35.5	.60-1.25 GPH 60, 80 W or B
	Press Series	2.00-12.00 GPH 60 or 45 B
Intertherm	MAC 1265	P/N 6601-181 or .55 GPH 90 W or .579 MH
Wayne Home Equipment	P100	.50-1.00 GPH 60, 70, 80 A B
	EHASR	.75-3.00 GPH 80, 70 60 **
	MSR	.75-2.75 GPH 80, 70, 60 **
	EG1	.50-2.50 GPH 80, 70, 60 **
	HS	.50-3.00 GPH 80, 70, 60 **
	EH & EHA	2.25-6.00 GPH 80, 70, 60 B

**Under 1.00 GPH use A; above 1.00 GPH use B

Nozzle Size or Rating (GPH)	Spray Angle	Square or Rectangle Combustion Chamber			C Nozzle height (in.)	Round Chamber Diameter In Inches
		L Length (in.)	W Width (in.)	H Height (in.)		
0.50-0.65	80	8	8	11	4	9
0.75-0.85	60	10	8	12	4	*
	80	9	9	13	5	10
1.00-1.10	45	14	7	12	4	*
	60	11	9	13	5	*
	80	10	10	14	6	11
1.25-1.35	45	15	8	11	5	*
	60	12	10	14	6	*
	80	11	11	15	7	12
1.50-1.65	45	16	10	12	6	*
	60	13	11	14	7	*
	80	12	12	15	7	13
1.75-2.00	45	18	11	14	6	*
	60	15	12	15	7	*
	80	14	13	16	8	15
2.25-2.50	45	18	12	14	7	*
	60	17	13	15	8	*
	80	15	14	16	8	16
3.00	45	20	13	15	7	*
	60	19	14	17	8	*
	80	18	16	18	9	17



HEAT CONTROLS

OIL NOZZLES HAGO



"H" Hollow Cone - Red Caps	
Spray Angles	Flow Rate Range
30°	.65 - 9.00 GPH
45°	.40 - 9.00 GPH
60°	.40 - 9.00 GPH
70°	.40 - 9.00 GPH
80°	.40 - 9.00 GPH
90°	.50 - 9.00 GPH



"EH" Extra Hollow Cone - Red Caps	
Spray Angles	Flow Rate Range
45°	4.0 - 30.00 GPH
70°	4.0 - 30.00 GPH



"S-S" Semi Solid Cone - Blue Caps	
Spray Angles	Flow Rate Range
30°	.65 - 20.00 GPH
45°	.40 - 35.00 GPH
60°	.40 - 35.00 GPH
70°	.40 - 35.00 GPH
80°	.40 - 35.00 GPH
90°	.50 - 20.00 GPH



"B" Solid Cone - Black Caps	
Spray Angles	Flow Rate Range
30°	.40 - 2.00 GPH
45°	.40 - 2.00 GPH
60°	.40 - 2.00 GPH
70°	.40 - 2.00 GPH
80°	.40 - 2.00 GPH
90°	.40 - 2.00 GPH



"ES" Solid Cone - Green Caps	
Spray Angles	Flow Rate Range
30°	.40 - 1.75 GPH
45°	.40 - 1.75 GPH
60°	.40 - 1.75 GPH
70°	.40 - 1.75 GPH
80°	.40 - 1.75 GPH



"P" Solid Cone - Green Caps	
Spray Angles	Flow Rate Range
30°	2 - 15.00 GPH
45°	2 - 15.00 GPH
60°	2 - 15.00 GPH
70°	2 - 15.00 GPH
80°	2 - 15.00 GPH

www.hagonozzles.com



OIL SERVICE PARTS



43000

141TF

Item	Manufacturer	Description
141TF	Fireomatic	1/2 npt x 3/8 npt Bottom Tank Outlet
104-CF		3/8 fl x _ npt valve Burner Valve
100-HCV		3/8 npt Check Valve
V-2S		Mushroom Cap
DTB		2 x 3/8 x 3/8 Dbl Tank Bshg
TS300		Red Thermal Switch
01402 VG125	Scully	Ventalarm Gauge 26-27 Depth
01413 VG 126		1 1/2 Tk Hole 42-44 Depth
01422 EG-215		Econo Gauge 2 Tk Hole
04316 UF-21		Scully Cap 42-44 Tk Hole
43000	Crown Tiger Loop	Oil De-aerator
43005	1/2 x 36	Flex Oil Line
100	Lynn	Quickie .75-1.25gph
200		Quickie 1.35-1.75gph
9511		Miller Burner Gasket
9513		Miller Brnr Plt Gkt

HEAT CONTROLS



CONDENSER FAN MOTORS DAYTON



Part #	Description	HP-Volts	RPM/Speed
3M839	Open Dripoff Split Cap.	1/6-208/230	1075
3M336	Open Dripoff Split Cap.	1/4-208/230	1075
3M224	Open Dripoff Split Cap.	1/3-208/230	825
3M217	Open Dripoff Split Cap.	1/3-208/230	1075
4M233	Open Dripoff Split Cap.	1/2-208/230	1075
3M221	Open Dripoff Split Cap.	1/2-230	1075
3M769	Open Dripoff Split Cap.	3/4-208/230	1075
3M226	Open Dripoff Split Cap.	1/4-230	1075/2
5HC02	Open Dripoff Split Cap.	1/3-208/230	1075/2
3M990	Up or Hor. w/Capacitor	1/4-230	1075
4M262	Up or Hor. w/Capacitor	1/3-230	825
3M221	Up or Hor. w/Capacitor	1/2-230	1075
4M016	Open Dripoff Shaded Pole ³	1/6-230	1550
5HC04	Totally Enclosed	1/8-208/230	825
3LU93	Totally Enclosed	1/6-208/230	825
3LU94	Totally Enclosed	1/4-208/230	1075
3LU97	Totally Enclosed	1/3-208/230	825/2
3M263	Totally Enclosed	1/2-208/230	825
4M132	Totally Enclosed ²	3/4-208/230	1075
4M062	Totally Enclosed	1/2-208/230	1075/2
4M205G	Com. Split Cap. Enclosed	1/4-208/230	1075
4M206G	Com. Split Cap. Enclosed	1/3-208/230	1075
4M207G	Com. Split Cap. Enclosed	1/2-208/230	1075
3M769	Com. Split Cap. Enclosed	3/4-208/230	1075

FAN AND BLOWER MOTORS DAYTON

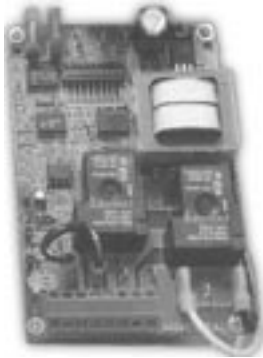
Part #	Description	Mfg. Number	HP-Volts	RPM/Speed
4M096	Reversible Dir. Drive ¹		1/4-115	1075/3
4M097	Reversible Dir. Drive ¹		1/4-208/230	1075/3
4M098	Reversible Dir. Drive ¹		1/3-115	1075/3
4M099	Reversible Dir. Drive ¹		1/3-208/230	1075/3
7E668	Reversible Dir. Drive ¹		1/2-115	1625/3
7E671	Reversible Dir. Drive ¹		1/2-208/230	1075/4
7E654	Reversible Dir. Drive ¹		3/4-208/230	1075/3
5HC10	Rev. Multi-Horsepower ²		1/2 to 1/6-115	1075/4
5HC11	Rev. Multi-Horsepower ²		1/2 to 1/6-208/230	1075/4
6K551	Reversible Belt Drive ³		1/6-115	1725
3M339	Reversible Belt Drive		1/4-115	1725
4M042	Reversible Belt Drive ³		1/2-115	1725
MOT06195	Rev. Unit Htr. Split Cap ¹	9034	1/6-115	1075
MOT06196	Rev. Unit Htr. Split Cap ¹	9035	1/4-115	1075
MOT06197	Rev. Unit Htr. Split Cap ¹	9036	1/3-115	1075

¹2 1/2" Hub Ring Mount 5.6" Diameter; ²2 1/2" Hub Ring Mount 5" Diameter;
³NEMA 48 Frame

BURNER MOTORS DAYTON

Part #	Description	Mfg. Number	HP/Volts	RPM/Speed
MOT06255	Oil Burner Mtr. 58N Frame	5866	1/7-115	3450

POWER VENTERS AND ACCESSORIES TJERNLUND

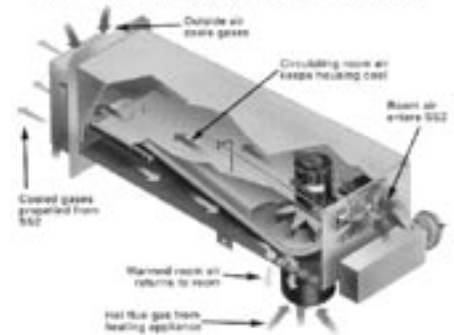


UC1

Features:

- Adjustable pre and post purge.
- LED status/diagnostic indicators.
- Prover switch delay to avoid burner start up and wind induced short cycling.
- Interlocks with any 24-120VAC burner control circuit.
- Includes "dry" contact actuation option.

An Inside Look At The SS2 System



Part #	Description
DJ3	Draft inducer for 3" to 6" dia. pipe
D3	Draft inducer for 5" to 8" dia. pipe
SS1	Side Shot Power Venter for 50-160 MBtuH gas or 70-220 MBtuH flame retention oil
SS2	Side Shot for Oil Only
GPAK-1	Power Venter Kit
GPAK-1T	Power Venter Kit
GPAK-JT	Power Venter Kit
VH1-3	Sidewall vent hood 3"
VH1-4	Sidewall vent hood 4"
VH1-6	Sidewall vent hood 6"
PAI-1T	Inforcer - timer/clock operated fresh air intake
PAI-10	Inforcer - interlocked combustion air intake for oil equipment
PAI-2G	Inforcer - interlocked combustion air intake for gas equipment
MAC3	Control for PAI
MAC4	Control for PAI
WHK-1	Instantaneous Water Heater Control Interlock

Model No.	Natural LP Gas MBtuH	Flame Retention Oil Burner MBtuH	Standard Oil Burner MBtuH	Max. Equivalent Feet	Dimensions HxWxD	Inlet Center
SS1	50-160	70-220	70-180	50	14 ³ / ₄ x15 ¹ / ₈ x27 ³ / ₈	23 ¹ / ₄
SS1C	N/A	50-315	50-223	50	14 ³ / ₄ x15 ¹ / ₈ x27 ³ / ₈	23 ¹ / ₄
Fan Assisted NG & LP			Atmospheric NG & LP			
SS2	40-150	70-168	40-125	50	13 ¹ / ₄ x10 ¹ / ₂ x38	22 ³ / ₈

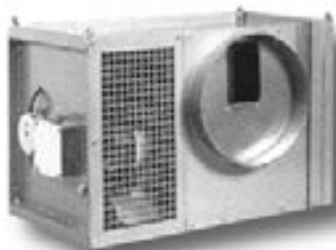
SS1/SS1C require 8"H x 8³/₈"W opening through wall. SS2 requires an 8¹/₂"H x 10¹/₂"W opening.

Model No.	Burner capacity MBtuH	Max Venting Length	Vent Pipe Dia.	Dimensions HxWxD	Inlet/Outlet
VP-2	60	75 ft.	3"	10 ¹ / ₂ x7 ¹ / ₂ x10	3"
VP-3	60-120	75 ft.	4"	7 ⁷ / ₈ x10 ¹ / ₄ x7	4"

VP-2 includes VH1-3 Vent Hood - VP-3 includes VH1-4 Vent Hood

Model No.	Vent Dia.	Min. MBtuH cap.	Vent Distance	Vent Temp Max	Max MBtuH cap.	Vent Distance	Vent Temp Max
HSJ	4"	50.0	100'	500°F	125.0	23'	400°F
HS1	4"	150.0	35'	500°F	300.0	4'	300°F
	6"	150.0	100'	500°F	300.0	30'	300°F
HS2	6"	350.0	100'	500°F	600.0	15'	300°F
	8"	350.0	100'	500°F	600.0	67'	300°F
HS3	8"	450.0	100'	300°F	700.0	7'	300°F
	10"	450.0	100'	300°F	700.0	21'	300°F
HS4	8"	700.0	100'	300°F	1200.0	5'	300°F
	10"	700.0	100'	300°F	1200.0	14'	300°F
	12"	700.0	100'	300°F	1200.0	34'	300°F
HS5	10"	1200.0	100'	300°F	1825.0	29'	300°F
	12"	1200.0	100'	300°F	1825.0	72'	300°F
	14"	1200.0	100'	300°F	1825.0	100'	300°F

Model	MBtuH Input	Gas Atmospheric		Gas Power Burner		Gas Power Burner w/ Barometric Damper		Oil Flame Retention w/ Barometric Damper	
		Max. Lgth.	Duct Diam.	Max. Lgth.	Duct Diam.	Max. Lgth.	Duct Diam.	Max. Lgth.	Duct Diam.
PAI-3	150	100	6	100	6	100	6	100	6
	200	100	6	100	6	100	6	100	6
	250	100	6	100	6	100	6	100	6
	275	100	8	100	6	100	6	100	6
PAI-4	300	100	8	100	6	100	6	100	6
	350	100	8	100	6	100	6	100	6
	400	100	8	100	6	100	8	100	6
	450	52	10	100	6	100	8	100	6
PAI-5	500	100	10	100	8	98	6	100	8
	550	100	10	100	8	100	8	100	8
	600	100	10	100	8	100	8	100	8



Model PAI-5

HEAT CONTROLS

TJERNLUND MODEL SELECTION TABLE

Notes

- If the appliance flue outlet is greater than 4", install a tapered reducer after the draft hood, draft diverter or barometric draft control, reducing vent pipe diameter to 4". All vent pipe from the appliance to the Power venter may be 4"
- The table below is based on straight vent pipe. 90° elbows are equivalent to 6 feet of straight vent pipe
- Determine maximum pipe length from type of equipment being vented and GPAK model:

Column A pipe runs over 30 linear feet should use Type "B" vent.

Column B&C pipe runs over 15 linear feet should use Type "B" vent

- Column C allows for up to a 40 MBtuH input atmospheric water heater common vented with a fan assisted appliance from Column B
- Vent pipe and pipe accessories to be supplied by installer

Models Diam.	Vent Pipe Input	MBtuH A Ft.	Atmospheric B Ft.	Fan Assisted C Ft.	*40,000ATM +Column B
GPAK-J	4	45	100	60	60
GPAK-J*	4	75	100	60	60
GPAK-JT	4	100	100	60	N/A
GPAK-JT*	4	120	45	60	N/A
GPAK-1	4	100	100	60	60
GPAK-1*	4	120/150	100	60	60
GPAK-1T	4	200	87	N/A	N/A
GPAK-1T*	4	250	40	N/A	N/A

*Models include 4" draft control and are eligible for HTPP replacement program



DRAFT CONTROLS FIELD CONTROL COMPANY



RC



CAS-2

Part #	Description
5RC	5" Barometric Draft Control w/ Collar for Draft Settings .02" to .08"
6RC	6" Barometric Draft Control w/ Collar for Draft Settings .02" to .08"
7RC	7" Barometric Draft Control w/ Collar for Draft Settings .02" to .08"
8RC	8" Barometric Draft Control w/ Collar for Draft Settings .02" to .08"
9RC	9" Barometric Draft Control w/ Collar for Draft Settings .02" to .08"
CAS-2B	Beckett AirBoot Kit for Oil Burner Intake Air
CAS-2C	Carlin AirBoot Kit for Oil Burner Intake Air
CAS-1	Combustion Air System
CAS-3	Fan in a Can 110v Oil System

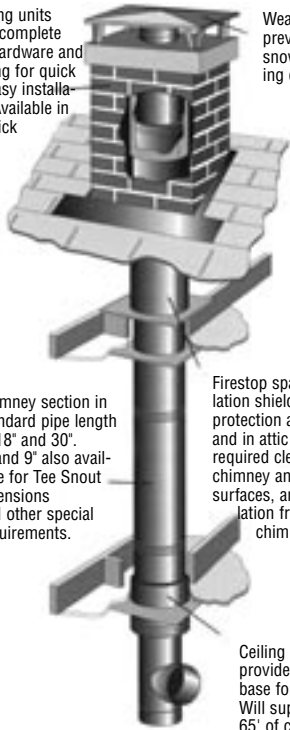
CAS Fan in a Can Sizing

CAS-3 Oil GPH	Max. Equiv. Ft. 4" Duct w/ Restrictor	Max. Equiv. Ft. 4" Duct	Max Equiv. Ft. 6" Duct
.25	282	273	293
.50	233	248	276
.75	180	222	262
.90	124	194	247
1.00	64	165	232
1.25		136	217
1.35		106	202
1.55		75	186
1.75		43	171
2.00			141
2.50			110
2.75			80
3.25			49

HEAT CONTROLS

TD 2100°F ALL FUEL CHIMNEY PARTS METLVENT

Housing units come complete with hardware and flashing for quick and easy installation. Available in red brick.

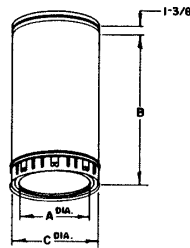


Weather cap prevents rain or snow from entering chimney.

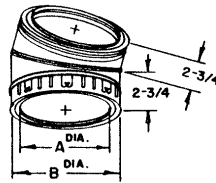
Chimney section in standard pipe length of 18" and 30". 6" and 9" also available for Tee Snout extensions and other special requirements.

Firestop space and attic insulation shield offers complete protection at ceiling joists, and in attic areas. Maintains required clearance between chimney and combustible surfaces, and prevents insulation from contacting chimney.

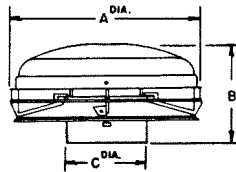
Ceiling support provides sturdy base for chimney. Will support up to 65' of chimney.



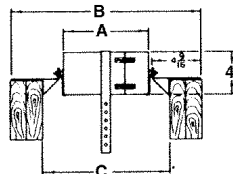
TDP



TDEL

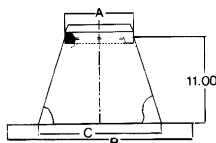


TDC

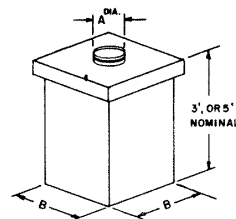


TDSC

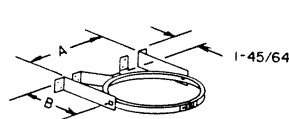
Roof Support will support 30'



TDRS

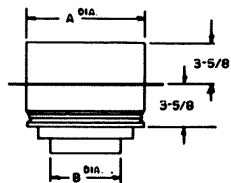


TDH



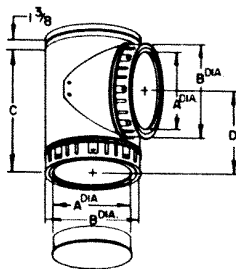
TDWB

Part #	"A"	"B"	"C"	"D"
TDP 6" Pipe	6	6	8	
	6	9	8	
	6	18	8	
	6	30	8	
TDP 7" Pipe	7	6	9	
	7	9	9	
	7	18	9	
	7	30	9	
TDP 8" Pipe	8	6	10	
	8	9	10	
	8	18	10	
	8	30	10	
TDP 10" Pipe	10	6	12	
	10	9	12	
	10	18	12	
	10	30	12	
TDIT 6" Tee	6	8	18	9
TDIT 7"	7	9	18	9
TDIT 8"	8	10	18	9
TDIT 10"	10	12	18	9 1/2
TDEL 6" 15° Elbow	6	8		
TDEL 7"	7	9		
TDEL 8"	8	10		
TDC 6" Topper	14 1/8	7 1/4	6	
TDC 7"	15 1/8	7 11/32	7	
TDC 8"	18 1/8	7 9/16	8	
TDC 10"	23	9 1/2	10	
TDSC 6" Ceiling Support	10	6 1/4		
TDSC 7"	11	7 1/4		
TDSC 8"	12	8 1/4		
TDSC 10"	14	10 1/4		
*Will support 65' of pipe				
TDFS 6" Firestop	8 1/8	10	15	
TDFS 7"	9 1/8	11	16 1/4	
TDFS 8"	10 1/8	12	17	
TDFS 10"	12 1/8	16	19 1/4	
TDWB 6" Wall Band	8 5/8	6		
TDWB 7"	9 5/8	6		
TDWB 8"	10 5/8	7		
TDWB 10"	12 5/8	8		
*One for each 8' of chimney				
TDRS 6" Roof Support	8	17 7/8	12	
TDRS 7"	9	18 7/8	13	
TDRS 8"	10	19 7/8	14	
TDRS 10"	12	21 7/8	16	

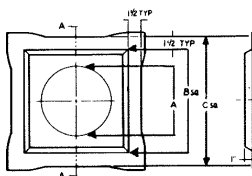


TDSC

Galv. Finish to be used to extend insulated pipe below the support



TDIT



TDFS

Part/Description	6	7	8	10
TDPA Single Wall Pipe Adapter	**	**	**	**
TDAP Masonry Anchor Plate	**	**	**	**
TDSB Support Band-For Chimneys ext.5' or more above roof	**	**	**	**
TDS Storm Collar	**	**	**	**
TDF Adj.Roof Flashing 1/12-6/12	**	**	**	**
TDFA Adj.Roof Flashing 7/12-12/12	**	**	**	**
TDTF Tall Cone Flashing	**	**	**	**

HEAT CONTROLS

B-VENT CHIMNEY PARTS METLVENT



RC

Metal Cap 14"-24"



RWT

Wall Thimble



RF

Adj. Roof Flashing
Flat 6/12



RTF

Tall Cone
Roof Flashing



RFS

Firestop Spacer



RPA

Adjustable Length



REA 90°

Adjustable Elbow



RT

Tee



RTC

Tee Cap



RS

Storm Collar 3"-6"

Part	Description	3	4	5	6	7	8	10	12	14	16	18	20
*RP5	Pipe 5'	*	*	*	*	*	*						
*RP4	Pipe 4'	*	*	*	*	*	*						
*RP3	Pipe 3'	*	*	*	*	*	*	*	*				
*RP30	Pipe 30"								*	*	*	*	
*RP24	Pipe 2'	*	*	*	*	*	*	*	*	*	*	*	*
*RP18	Pipe 18"	*	*	*	*	*	*	*	*	*	*	*	*
*RP12	Pipe 1'	*	*	*	*	*	*	*					
*RP6	Pipe 6"	*	*	*	*	*	*						
*REA90	90° Adj.Elbow	*	*	*	*	*	*						
*RE45	45° Adj.Elbow	*	*	*	*	*	*	*	*	*	*	*	*
*RT	Tee	*	*	*	*	*	*	*	*	*	*	*	*
*RTC	Cap	*	*	*	*	*	*	*	*	*	*	*	*
*RSA	Support Assembly	*	*	*	*	*	*	*	*	*	*	*	*
*RWB	Wall Bracket	*	*	*	*	*	*	*	*	*	*	*	*
*RF	Adj.Roof Flash. 0-6/12	*	*	*	*	*	*	*	*	*	*	*	*
*RFA	Adj.Roof Flash. 6-12/12	*	*	*	*	*	*						
*RTF	Tall Cone Roof Flash.	*	*	*	*	*	*	*	*	*	*	*	*
*RS	Storm Collar	*	*	*	*	*	*	*	*	*	*	*	*
*RPC	Pipe Collar	*	*	*	*	*	*						
*RA	Univ.Adapter Male	*	*	*	*	*	*						
*RRA	Univ.Adapter Fem.	*	*	*	*	*	*						
*RDH	Draft Hood Connector	*	*	*	*	*	*	*	*	*	*	*	*

* = Diameter Size

• See page 0 for B-Vent sizing tables

HEAT CONTROLS